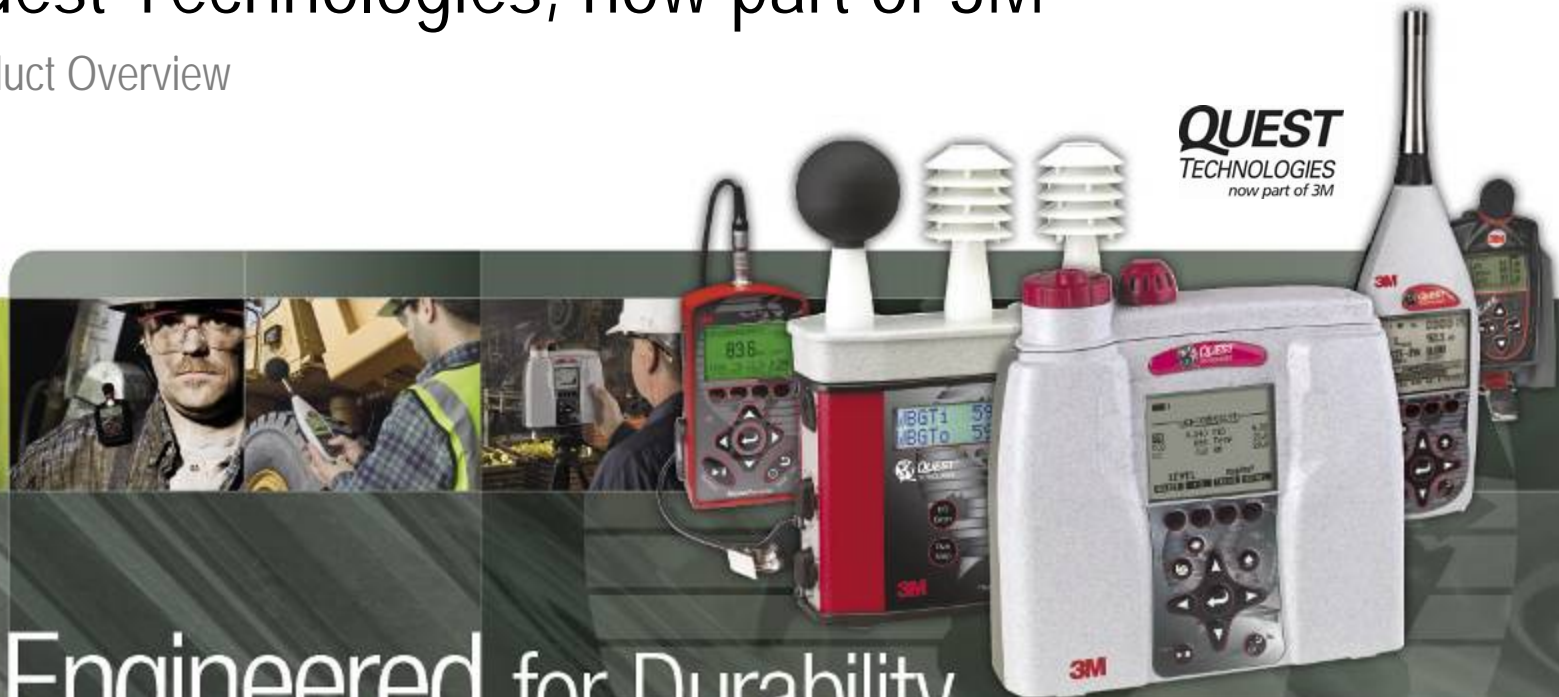


3M Occupational Health & Environmental Safety Division

# Quest Technologies, now part of 3M

Product Overview

**QUEST**  
TECHNOLOGIES  
*now part of 3M*



Engineered for Durability  
Designed for Ease-of-Use  
Supported by Professionals

**3M**

# Occupational & Environmental Noise

## Basic Sound Level Meters

- ❑ Class / Type 1 and 2 Models
- ❑ Certified Intrinsically Safe
- ❑ Easy to Setup and Operate
- ❑ 30 to 140 dB Range
- ❑ A, C & Z Weighting Filters
- ❑ Attractive Size & Weight
- ❑ Remote Microphone Option



## ***Occupational & Environmental Noise***

# ***SoundPro™ SE & DL Series***

### ***Handheld Sound Level Meters & Real-Time Analyzers***

- Real-Time Integrating Sound Level Meter
- 1/1 & 1/3 Octave Real-Time Filters
- Compliant: EN/IEC 61672 & ANSI SLM
- Class/Type 1 and 2 models
- Rugged Ergonomic Housing
- Time History Data logging



**NEW**  
**Reverb Option**

**Now Available with Acoustic Spectral Curves, Speech Intelligibility and Reverberation Measurement Options**



## *Occupational & Environmental Noise*

# *Verifier*

***Speech Intelligibility Instrument  
Special Type of Sound Level Meter to Measure  
Speech Intelligibility***

- Easy User Set-up and Operation
- Results given in STI or CIS Scale
- 15 Second Measurement Intervals
- Displays Table of Modulation Indices



## Occupational & Environmental Noise

# THE EDGE

### Cable-Free Personal Noise Dosimeter

- ❑ Thin, Contoured Shoulder Mount Design
- ❑ Long Life Lithium Polymer Battery
- ❑ Available with 1 or 5 Bay Docking Station
- ❑ Status Display and LED Annunciators
- ❑ eg5 model has MSHA, SIRA (ATEX), CSA & Simtars Intrinsic Safety Approval



## Occupational & Environmental Noise

# NoisePro™ Series

### Personal Noise Dosimeters

- Intrinsically safe: UL, MSHA, ATEX
- Class/Type 1 and 2 Models
- Up to 4 dosimeters in One
- Real-Time Exposure Indicator
- Rugged Metal Housing
- User Friendly Operation



# EVM-7 Environmental Monitoring

## 7 in 1 Solution for Dust & Air Quality Analysis

**NEW!**

- Simultaneously Measures and Logs:  
Particulate Concentrations, Carbon Dioxide, VOCs  
(PID ppm or ppb) Relative Humidity, Toxic Gas, Air  
Velocity (optional), Temperature
- Dial-In Impactor For Quick Selection  
PM2.5, PM4, PM10, TSP
- 90° Light Scattering Photometer
- CO2 Trending For AQ Analysis
- ROHS Compliant



### Additional Models Include:

EVM-3 Particulate Concentration Monitor

EVM-4 Indoor Air Quality Monitor

CE

**3M**

## Human Vibration

# HavPro / VI-410

- ❑ Simultaneously Monitors Up To 4-Input Channels
- ❑ 1/1 & 1/3 Octave Real Time Frequency Analyzer
- ❑ Summary and Time History Data
- ❑ HAV, WBV, Sound, & Single Axis Testing

- ❑ Basic 3-Channel Vibration Monitor
- ❑ Easy to Use and Compact
- ❑ Predefined Hand-Arm & Whole-body Measurement Setups



## Heat Stress Monitors

**QUEST**  
TECHNOLOGIES  
now part of 3M

# QUESTemp<sup>®</sup> 32/34/36

- ❑ Portable WBGT Monitoring
- ❑ Certified Intrinsically Safe
- ❑ Wet Bulb, Dry Bulb, Globe Temp, %RH, WBGT In/Out, Heat Index & HUMIDEX Indices
- ❑ Optional Air Velocity Sensor (QT 36)
- ❑ Time History Data Logging



## Heat Stress Monitors

**QUEST**  
TECHNOLOGIES  
now part of 3M

# QUESTemp<sup>TM</sup> 44/46/48N

*With Waterless Wet Bulb*

- Portable WBGT Monitoring
- Eliminates Hassle of Wet-Bulb Maintenance
- Wet Bulb, Dry Bulb, Wet-Bulb Temp  
(Calculated) %RH, WBGT In/Out,  
Heat Index & HUMIDEX
- Multilingual Instrument Display
- Optional Air Velocity Sensor
- Time History Data Logging
- D-ring attachments and a heavy-duty lanyard (QT48N only)
- Event logging mode for quick evaluation (QT48N only)



## Heat Stress Monitors

# QUESTemp<sup>TM</sup> III

## Personal Heat Stress Monitor

- ❑ Incorporates Effects of Protective Clothing & Personal Condition
- ❑ Ear Canal Temperature Sensor
- ❑ Audio Alarms at the Ear
- ❑ Compact & Lightweight
- ❑ Easy-to-Learn Operation
- ❑ Full Data Logging



## QuestSuite™ Professional III

- Only One Software Application to Learn
- Centrally Organize & Access Exposure Data
- English, Spanish, German, French, Italian & Portuguese Language Support
- Excellent User Support

The screenshot displays the 'Study#1' configuration window in QuestSuite Professional III. The window title is 'Quest Study Default #1'. It is divided into two main panels: 'Information Panel' and 'General Data Panel'.

**Information Panel:**

- Name: Study#1
- Comments:
- Start Time: Thursday, November 03, 2005 08:38:28
- Stop Time: Thursday, November 03, 2005 15:19:32
- Location: Colorado Stone Quarry 00-1
- Parent Session:
- How Name:

**General Data Panel:**

Description	Mets	Value
Dose	1	32.2 %
Leq	1	--
Leq	2	74.3 dB
Dose	2	9.5 %
Dose	3	--
Leq	3	--
Dose	4	--
Leq	4	--
Lpk	--	141.2 dB
PKTime	--	11/3/2005 8:39:22 AM
Exchange Rate	1	5 dB
Response	1	SLDw
Weighting	1	A

**QuestSuite Professional II**

File Options Tools List Help

**My Instruments**

My Instruments  
My Data  
Garbage  
Downloaded  
Edge  
NoisePro DL Samples  
SoundPro DL Studies  
SoundPro SE/DL Studies  
vibration tests

**Acoustics**

Acoustics  
Vibration  
IAQ  
Heat  
Other  
All

SoundPro DLX  
SoundPro SE/DL  
**The Edge**  
NoisePro  
Qxxx

**The Edge**

Device Name	Serial Number	Managed
beta-0001	beta-0001	False
beta-0012	beta-0012	False
edg010019	edg010019	False
beta-0008	beta-0008	False
EHG120005	EHG120005	False

Device List

Show Managed  
 Show All

**Edge Setup**

Edge Units

Select All

- EdgeDock-5
  - <empty bay>
  - Laura's[EHG12]
  - <empty bay>
  - <empty bay>
  - <empty bay>

Configuration | Commands

Dosimeter  Display  Auto On  Security

Timed Response:  Slow  Fast

RMS Weighting:  A  C

Peak Weighting:  C  Z

Dose % Indicator LED:   Alarm Enable  Heartbeat Enable

	Dosimeter 1	Dosimeter 2
Threshold (dB)	80 <input checked="" type="checkbox"/>	90 <input checked="" type="checkbox"/>
Exchange Rate (dB)	5	5
Upper Limit (dB)	115	117
Criterion Level (dB)	90	90
Named Setup	Setup 1	Setup 2

Send Setup to Instruments  Cancel

Status

Saved Setups

- Edge
- EDGE Beta Test setup
- Edge Beta test setup 2
- Edge 1 dosimeter setting
- Edge with Identity field set

Save Save As... Rename Delete Help

### Study 1

Custom Layout

#### Logged Data Chart

Legend: Lavg-1, Lmax-1, Lpk-1, Lavg-2

#### Logged Data Table

Timestamp	Lavg-1	Lpk-1	Lmax-1
11/19/2007 22:59:31.0	N/A	114.2	78.5
11/19/2007 23:00:31.0	N/A	109.0	77.2
11/19/2007 23:01:31.0	N/A	105.8	67.7
11/19/2007 23:02:31.0	N/A	105.9	65.8
11/19/2007 23:03:31.0	N/A	106.0	65.7
11/19/2007 23:04:31.0	N/A	106.2	65.7
11/19/2007 23:05:31.0	N/A	105.7	65.7
11/19/2007 23:06:31.0	N/A	106.0	65.7
11/19/2007 23:07:31.0	N/A	105.8	65.7
11/19/2007 23:08:31.0	N/A	106.0	65.8
11/19/2007 23:09:31.0	N/A	105.8	65.7
11/19/2007 23:10:31.0	N/A	106.0	65.7
11/19/2007 23:11:31.0	N/A	105.8	65.7

#### General Data Panel

Description	Meter/Sensor	Value
Dose	1	0 %
Lpk	1	121.2 dB
PKtime	1	11/19/2007 11:33:57 PM
Exchange Rate	1	5 dB
Response	1	SLOW
Log Rate	1	60 s
Dose	2	--
Lavg	2	--
Weighting	2	A
Response	2	SLOW
Exchange Rate	2	5 dB

#### Information Panel

**Name:**  
Study 1

**Comments:**

**Start Time:**  
Monday, November 19, 2007 22:58:31

**Stop Time:**  
Tuesday, November 20, 2007 00:25:01

**Location:**

**Parent Session:**  
beta-0001

**User Name:**

## Aurora Hospital Dosimetry Study - NICU Ward

3/19/2008

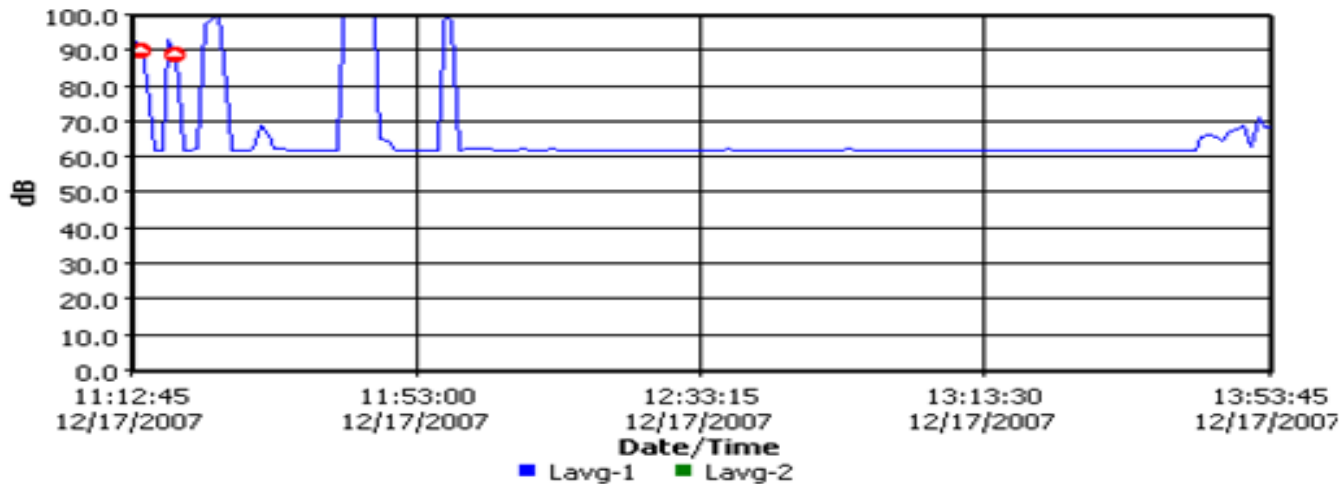
### Information Panel

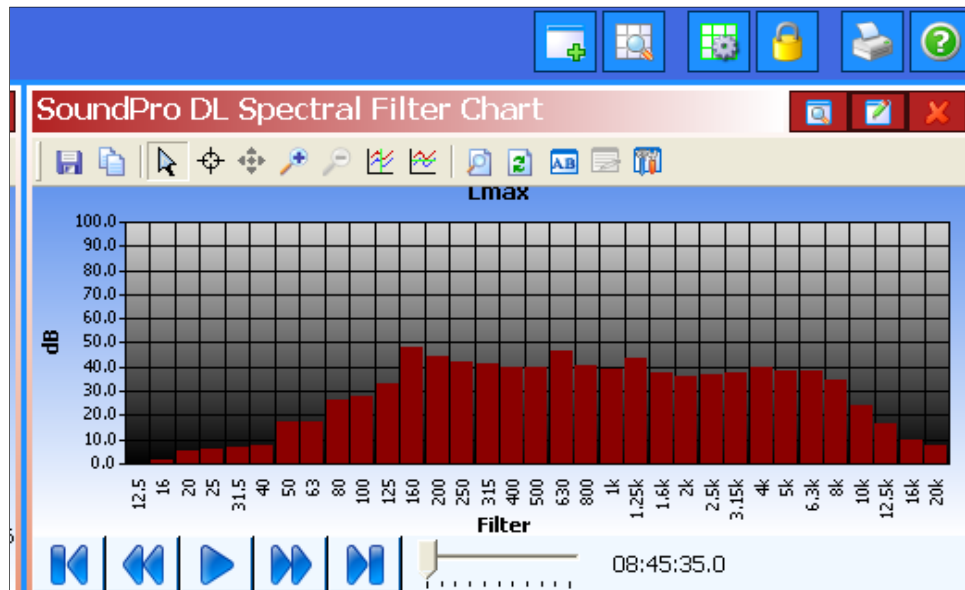
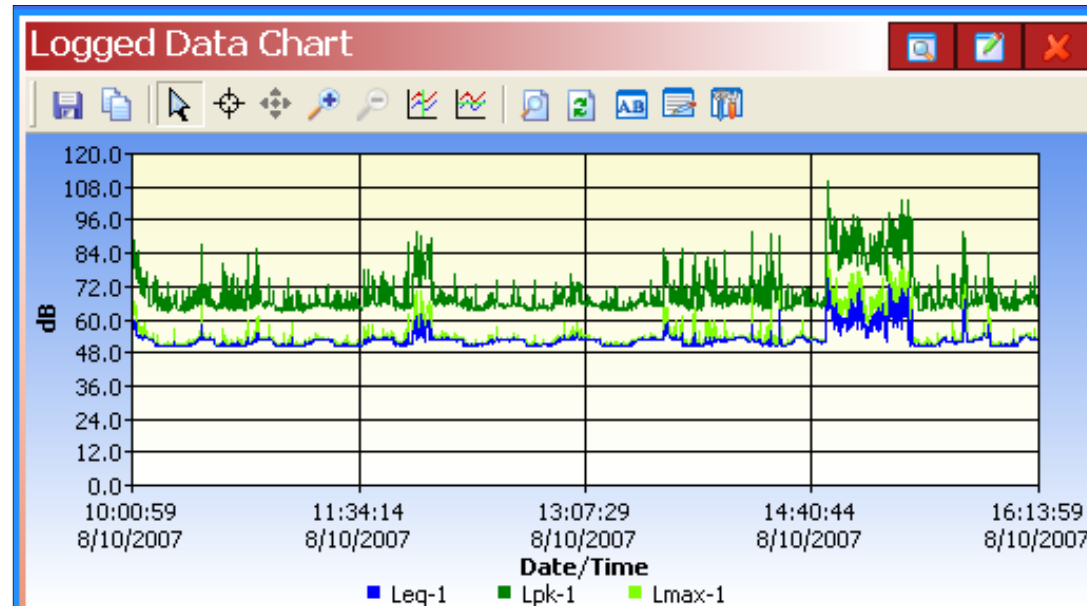
**Name** NICU Baby Ward  
**Comments**  
**Start Time** Monday, December 17, 2007 11:11:45  
**Stop Time** Monday, December 17, 2007 13:54:40  
**Location**  
**Parent Session** Aurora hospital construction site  
**User Name**

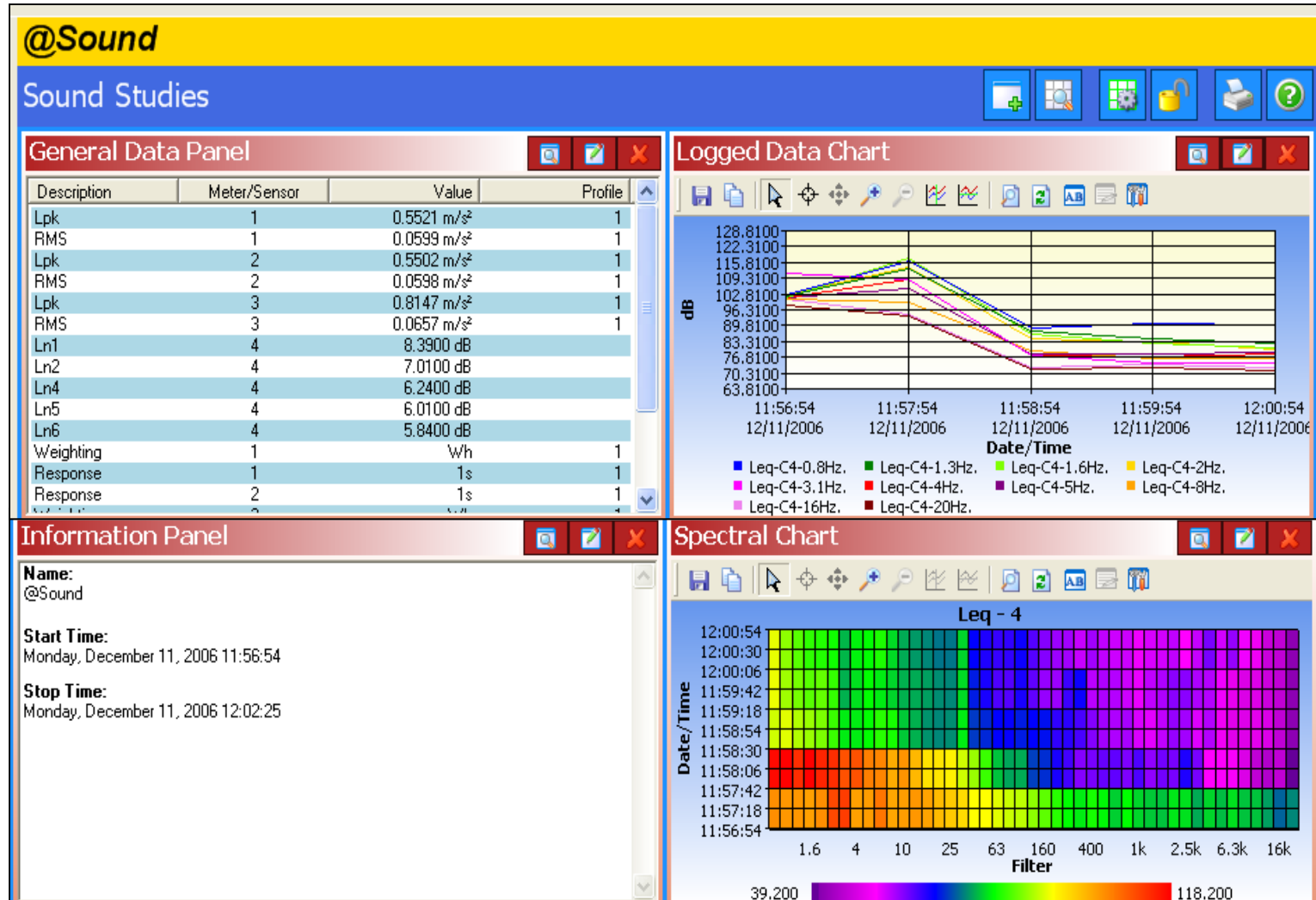
### General Data Panel

Description	Meter/Sensor	Value	Description	Meter/Sensor	Value
Dose	1	19.6 %	Lpk	1	--
PKtime	1	12/17/2007 11:17:50 AM	Exchange Rate	1	5 dB
Response	1	SLOW	Log Rate	1	60 s
Dose	2	19.6 %	Lavg	2	86 dB
Weighting	2	A	Response	2	SLOW
Exchange Rate	2	5 dB			

### Logged Data Chart



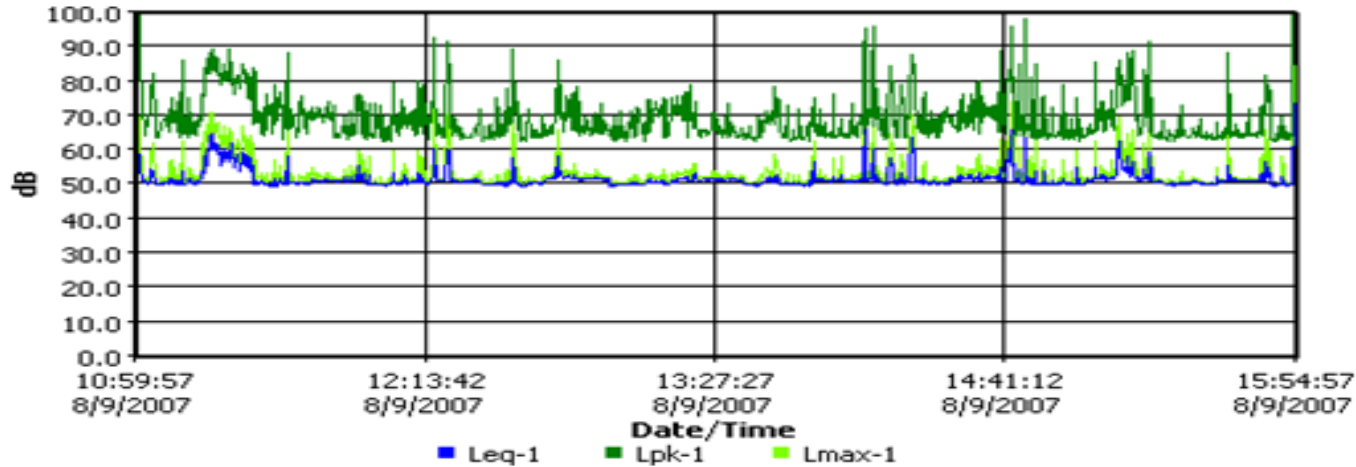




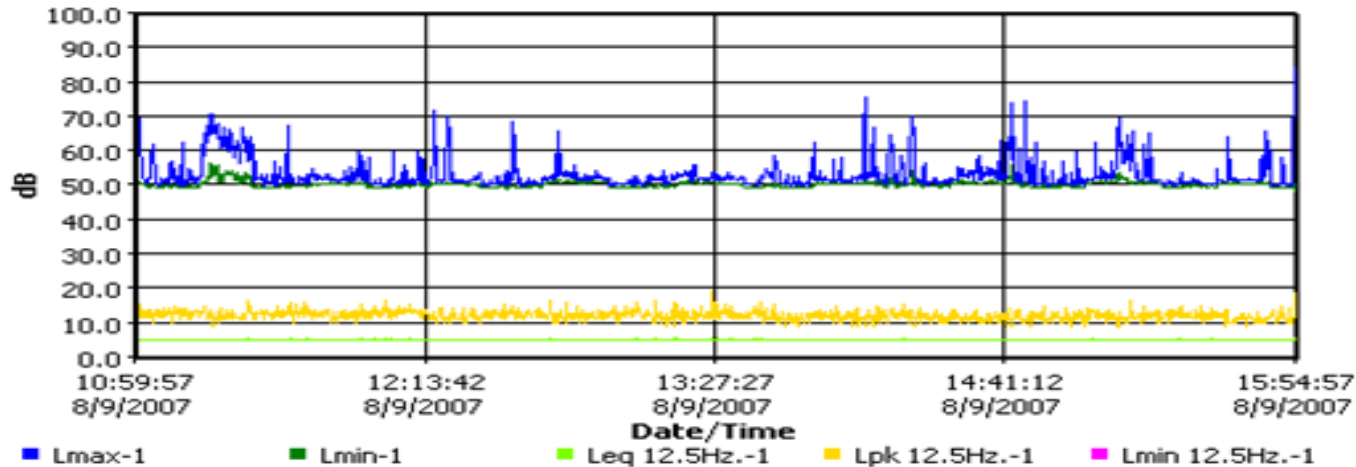
### Harley Davidson Sound Test

3/13/2008

Logged Data Chart



Logged Data Chart



# 3M™ Noise Indicator NI-100

*Easy-to-use, durable and economical noise indicating device*

- Alerts users when noise levels exceed 85dB
- Small and lightweight size
- Long-life (~200 hours) rechargeable battery
- Red flashing light – noise levels are above 85 dBA; hearing protection may be required
- Green flashing light – noise levels are below 85 dBA; hearing protection may not be necessary

